

ISAF M.TG srl Via B. Parodi, 286/A 16010 Ceranesi - Genoa Italy
 Tel. 010781793 - 0107848136 Fax 0107268816 e-mail: info@isafmtg.com

Type **BAM** Datasheet **1.5.20.3340**
 Rev. 0 Date 02/03/2003 Page 1/1

CONFIGURATION

Cylindrical vessel, either vertical or horizontal version, complete with valvehead, ISAF or UNI/UNAV type, and with the accessories requested by the classification society.

APPLICATION

Installation on compressed air lines for diesel engine starting.

DESIGN CONDITIONS

Max. Pressure 33 ÷ 40 bar
 Max. Temperature 50 °C
 Min. Temperature 0 °C

SPECIAL PLANTS

Particular constructions are realized on customer's specification.

ACCESSORIES AND COMPONENTS

ISAF systems can be supplied complete with monitoring equipments, valves, switchboards and other accessories which assure their proper functioning.
 For an easier installation a wide range of components can be supplied.

TESTS

RINA - ABS - LR - BV - GL - DNV - MMI

MATERIALS

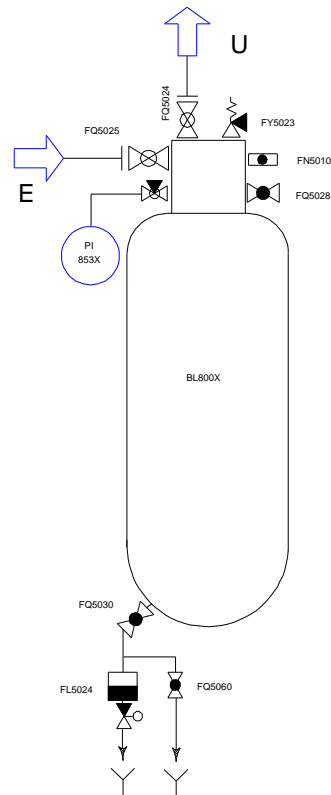
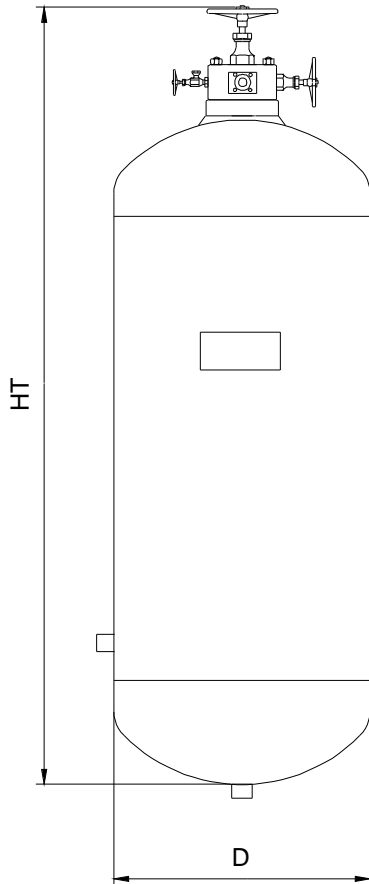
A1 STEEL P 265 GH
 A2 STEEL P 355 NH
 A3 ASTM A 106 B
 X AISI 304 L
 XX AISI 316 L

CONNECTIONS

Threaded BSP - NPT
 Flanged UNI - DIN - ASME - JIS

TREATMENTS

Treatment of internal and external surfaces according to the application of the plant.



All information and data shown on this datasheet can be modified without notice

Model	Capacity Lt.	Max.Design Pressure bar	D	HT	L	H	E - U	Weight Kg.
BAM100	100	40	356	1500			ND15 - 25	135
BAM150	150	40	356	2050			ND15 - 25	185
BAM250	250	40	508	1750			ND15 - 25	220
BAM500	500	40	508	3100			ND20 - 40	285
BAM500	500	33	610	2300			ND20 - 40	345
BAM700	700	33	610	3180			ND20 - 40	475