

ISAF M.TG srl Via B. Parodi, 286/A 16010 Ceranesi - Genoa Italy  
 Tel. 010781793 - 0107848136 Fax 0107268816 e-mail: info@isafmtg.com

Type	<b>BAC-LPT</b>	Datasheet	<b>31.5.20.8</b>
Rev.	0	Date	02/03/2003
		Page	1/1

**CONFIGURATION**

Vertical cylindrical vessel, with or without supports, complete with valvehead, ISAF or UNI/UNAV type, and with the accessories requested by the classification society.

**APPLICATION**

Installation on compressed air lines for automatism and various services.

**DESIGN CONDITIONS**

Max. Pressure 8 bar  
 Max. Temperature 50 °C  
 Min. Temperature 0 °C

**SPECIAL PLANTS**

Particular constructions are realized on customer's specification.

**ACCESSORIES AND COMPONENTS**

ISAF systems can be supplied complete with monitoring equipments, valves, switchboards and other accessories which assure their proper functioning.

For an easier installation a wide range of components can be supplied.

**TESTS**

RINA - ABS - LR - BV - GL - DNV - MMI

**MATERIALS**

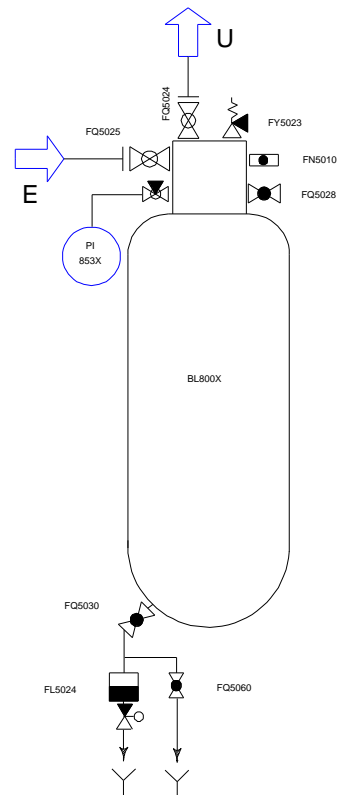
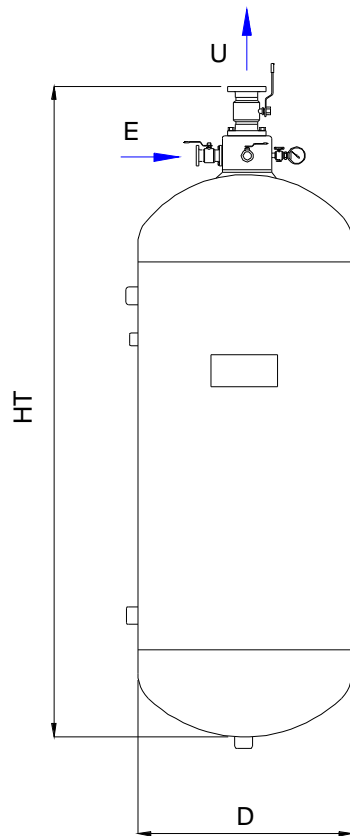
A1 STEEL P 265 GH  
 A2 STEEL P 355 NH  
 A3 ASTM A 106 B  
 X AISI 304 L  
 XX AISI 316 L

**CONNECTIONS**

Threaded BSP - NPT  
 Flanged UNI - DIN - ASME - JIS

**TREATMENTS**

Treatment of internal and external surfaces according to the application of the plant.



All information and data shown on this datasheet can be modified without notice

Model	Capacity Lt.	Max.Design Pressure bar	D	HT	L	H	E - U	Weight Kg.
BAC-LPT50	50	8	280	1150			ND15 - 20	50
BAC-LPT100	100	8	350	1400			ND15 - 20	65
BAC-LPT150	150	8	400	1550			ND15 - 20	71
BAC-LPT200	200	8	440	1700			ND15 - 25	88
BAC-LPT270	270	8	490	1750			ND15 - 25	95