

ISAF M.TG srl Via B. Parodi, 286/A 16010 Ceranesi - Genoa Italy
 Tel. 010781793 - 0107848136 Fax 0107268816 e-mail: info@isafmtg.com

Type **BAC-HPT** Datasheet **32.5.20.1240**
 Rev. 0 Date 02/03/2003 Page 1/1

CONFIGURATION

Vertical cylindrical vessel, with or without supports, complete with valvehead, ISAF or UNI/UNAV type, and with the accessories requested by the classification society.

APPLICATION

Installation on compressed air lines for automatism and various services.

DESIGN CONDITIONS

Max. Pressure 12 ÷ 40 bar
 Max. Temperature 50 °C
 Min. Temperature 0 °C

SPECIAL PLANTS

Particular constructions are realized on customer's specification.

ACCESSORIES AND COMPONENTS

ISAF systems can be supplied complete with monitoring equipments, valves, switchboards and other accessories which assure their proper functioning.

For an easier installation a wide range of components can be supplied.

TESTS

RINA - ABS - LR - BV - GL - DNV - MMI

MATERIALS

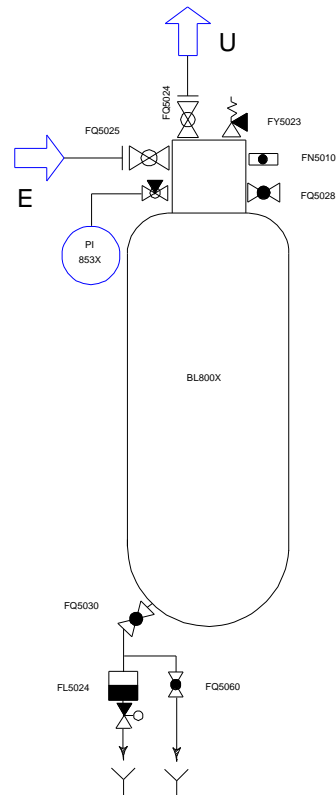
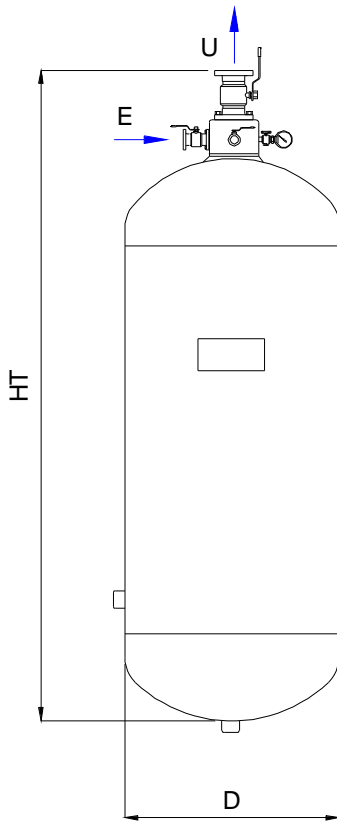
A1 STEEL P 265 GH
 A2 STEEL P 355 NH
 A3 ASTM A 106 B
 X AISI 304 L
 XX AISI 316 L

CONNECTIONS

Threaded BSP - NPT
 Flanged UNI - DIN - ASME - JIS

TREATMENTS

Treatment of internal and external surfaces according to the application of the plant.



All information and data shown on this datasheet can be modified without notice

Model	Capacity Lt.	Max.Design Pressure bar	D	HT	L	H	E - U	Weight Kg.
BAC-HPT50	50	12 - 40	320	1000			ND15 - 25	85
BAC-HPT80	80	12 - 40	320	1450			ND15 - 25	115

ISAF M.TG srl Via B. Parodi, 286/A 16010 Ceranesi - Genoa Italy
Tel. 010781793 - 0107848136 Fax 0107268816 e-mail: info@isafmtg.com

Type **BAC-HPT** Datasheet 32.5.20.1240.A
Rev. 0 Date 02/03/2003 Page 1/1

CONFIGURATION

Vertical cylindrical vessel, with or without supports, complete with valvehead, ISAF or UNI/UNAV type, and with the accessories requested by the classification society.

APPLICATION

Installation on compressed air lines for automatism and various services.

DESIGN CONDITIONS

Max. Pressure 12- 40 bar
Max. Temperature 50 °C
Min. Temperature 0 °C

SPECIAL PLANTS

Particular constructions are realized on customer's specification.

ACCESSORIES AND COMPONENTS

ISAF systems can be supplied complete with monitoring equipments, valveswitchboards and other accessories which assure their proper functioning.
For an easier installation a wide range of components can be supplied.

TESTS

RINA - ABS - LR - BV - GL - DNV - MMI

MATERIALS

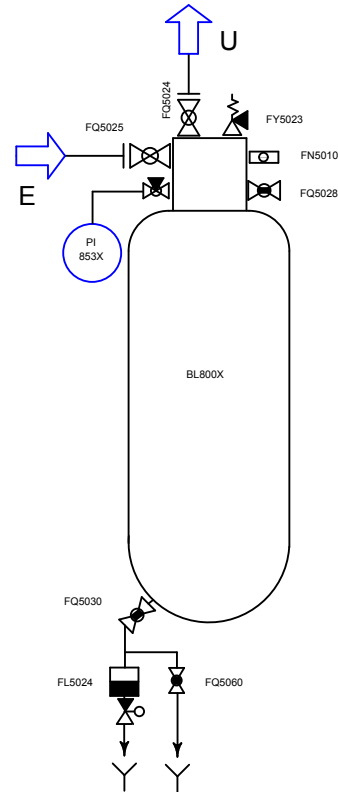
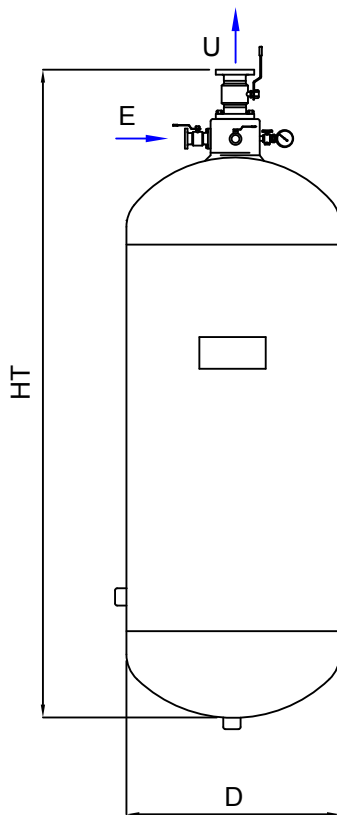
A1 STEEL P 265 GH
A2 STEEL P 355 NH
A3 ASTM A 106 B
X AISI 304 L
XX AISI 316 L

CONNECTIONS

Threaded BSP - NPT
Flanged UNI - DIN - ASME - JIS

TREATMENTS

Treatment of internal and external surfaces according to the application of the plant.



All information and data shown on this datasheet can be modified without notice

Standard flanges: UNI 2278/67 NP16 UNI 6084/67 NP40

Model	Capacity Lt.	Max.Design Pressure bar	D	HT	L	H	E - U	Weight Kg.
BAC-HP100	100	12+40	356	1350			ND 25	150
BAC-HP150	150	12+40	356	1900			ND 25	200
BAC-HP250	250	12+40	508	1600			ND 25	235
BAC-HP500	500	12+40	508	2900			ND 25	265
BAC-HP500	500	12+40	610	2100			ND 40	330
BAC-HP700	700	12+40	610	2970			ND 40	460