

ISAF M.TG srl Via B. Parodi, 286/A 16010 Ceranesi - Genoa Italy
 Tel. 010781793 - 0107848136 Fax 0107268816 e-mail: info@isafmtg.com

Type **BAC-HPT** Datasheet **32.5.20.1240**
 Rev. 0 Date 02/03/2003 Page 1/1

CONFIGURATION

Vertical cylindrical vessel, with or without supports, complete with valvehead, ISAF or UNI/UNAV type, and with the accessories requested by the classification society.

APPLICATION

Installation on compressed air lines for automatism and various services.

DESIGN CONDITIONS

Max. Pressure 12 ÷ 40 bar
 Max. Temperature 50 °C
 Min. Temperature 0 °C

SPECIAL PLANTS

Particular constructions are realized on customer's specification.

ACCESSORIES AND COMPONENTS

ISAF systems can be supplied complete with monitoring equipments, valves, switchboards and other accessories which assure their proper functioning.

For an easier installation a wide range of components can be supplied.

TESTS

RINA - ABS - LR - BV - GL - DNV - MMI

MATERIALS

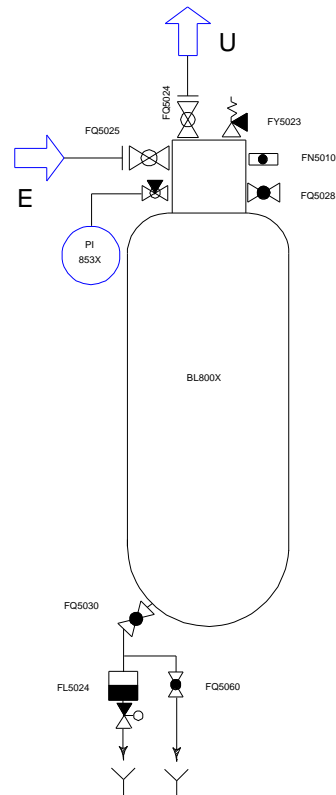
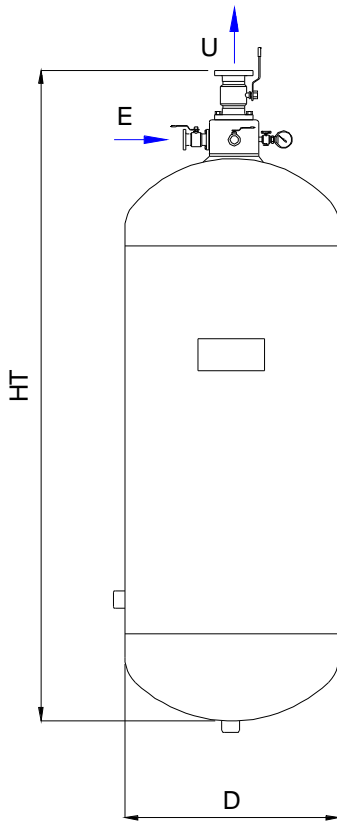
A1 STEEL P 265 GH
 A2 STEEL P 355 NH
 A3 ASTM A 106 B
 X AISI 304 L
 XX AISI 316 L

CONNECTIONS

Threaded BSP - NPT
 Flanged UNI - DIN - ASME - JIS

TREATMENTS

Treatment of internal and external surfaces according to the application of the plant.



All information and data shown on this datasheet can be modified without notice

Model	Capacity Lt.	Max.Design Pressure bar	D	HT	L	H	E - U	Weight Kg.
BAC-HPT50 BAC-HPT80	50 80	12 - 40 12 - 40	320 320	1000 1450			ND15 - 25 ND15 - 25	85 115